

DAILY RESEARCH, 6 AGUSTUS 2020

PT PROFINDO SEKURITAS INDONESIA

**GD PERMATA KUNINGAN LT 19
JL KUNINGAN MULIA KAV 9C GUNTUR SETIABUDI JAKARTA SELATAN 12980**

TELP +62 21 8378 0888

EMAIL : CUSTOMERSERVICE@PROFINDO.COM

WWW.PROFINDO.COM | PROCLICK.PROFINDO.COM

MARKET MOVERS



Bursa saham AS ditutup menguat setelah didorong stimulus Pemerintah AS dan keberhasilan uji coba vaksin Corvid 19. **DOW +1.39%, S&P +0.64%, NASDAQ +0.52%**

Bursa saham Eropa ditutup menguat setelah rilis data Jasa Inggris dan Penjualan Ritel Zona Eropa mulai perlahan pulih menumbuhkan optimisme pemulihan Ekonomi. **Indeks DAX +0.47%, FTSE +1.14%, CAC +0.90%**

Bursa Saham Asia dibuka mayoritas menguat didorong sentiment kebijakan Stimulus baru Pemerintah AS dan keberhasilan uji coba vaksin corvid 19 yang akan mulai diproduksi secara massal. **Hang Seng +0.62%, KOSPI +1.47%, Nikkei +0.05%**

Harga minyak mentah dunia menguat setelah persediaan minyak AS turun 7.4 juta barel. Harga emas ditutup menguat tipis setelah rencana kebijakan Stimulus baru Pemerintah AS untuk penanggulangan Corvid 19. **WTI -0.05%, Brent Oil -0.11%, Gold +0.27%.**

IHSG pada perdagangan hari ini diperkirakan akan **BULLISH** dengan Range pergerakan **5059-5157** dengan saham-saham yang dapat diperhatikan : **JPFA IMAS PYFA TLKM NIKL ADRO**

MARET DATA

AMERIKA

DOW 30	27,201.52	+373.05	+1.39%
S&P 500	3,327.77	+21.26	+0.64%
NASDAQ	10,998.40	+57.23	+0.52%

EUROPE

DAX	12,660.25	+59.38	+0.47%
FTSE 100	6,104.72	+68.72	+1.14%
CAC 40	4,933.34	+43.82	+0.90%

ASIA

SHANGHAI	3,377.40	-0.16	0.17%
HANGSENG	25,102.54	+155.91	+0.62%
SET	1,337.35	+6.54	+0.49%
KOSPI	2,345.92	+34.06	+1.47%
JCI	5,127.05	+52.05	+1.03%
NIKKEI	22,526.50	+11.65	+0.05%
ASX	6,029.40	+28.10	+0.47%

COMMODITIES

GOLD	2,042.70	+5.60	+0.27%
WTI OIL	42.17	-0.02	-0.05%
BRENT OIL	45.24	+0.05	+0.11%
COAL	53.54	-0.80	-1.48%
PALM OIL	2850	-40	-1.48%
TINS	17,862.50	-2.50	-0.01%
NICKEL	14,422.50	+155.00	+1.09%

EVENT & ECONOMIC CALENDER

ECONOMIC CALENDER :

INDONESIA

30820	MARKIT PMI MANUFACTURING (JUL) INFLATION RATE (MoM) JUL TOURIST ARRIVAL (YoY) JUN
50820	LOAN GROWTH (YoY) JUN GDP GROWTH (YoY) JUL BUSSINES CONFIDENCES Q2
60820	CONSUMER CONFIDENCE (JUL)

GLOBAL

030820	JPN GDP Q1 (QoQ) GERMAN MARKIT PMI MANUFACTURING (JUL) BRITISH MARKIT PMI MANUFACTURING (JUL) FRANCE MARKIT PMI MANUFACTURING (JUL) EUROPE MARKIT PMI MANUFACTURING (JUL) US MARKIT PMI MANUFACTURING (JUL)
040820	KOREA INFLATION RATE (MoM) JUL JAPAN CORE CPI (JUL) AUSTRALIA TRADE BALANCE (JUN) AUSTRALIA RETAIL SALES (JUN) EUROPE PPI (MoM) JUN
050820	US API CRUDE OIL STOCK CHANGE HONG KONG MARKIT PMI (JUL) EUROPE RETAIL SALES (MoM) JUN BANK OF JAPAN GOV KURODA SPECH US TRADE BALANCE (JUN)
060820	KOREA CURRENT ACCOUNT (JUN) BANK OF ENGLAND INTEREST RATE DECISION BANK OF ENGLAND QUANTITATIVE EASING US INITIAL JOBLESS CLAIMS
070820	CHINA TRADE BALANCE (JUL) GERMAN TRADE BALANCE (JUN) FRANCE TRADE BALANCE (JUN) US NONFARM PAYROLS (JUL)

CORPORATE ACTION :

DEVIDEN

040820	UNVR RP 107 (CUM 0408, PAYMENT 1908) SMSM RP 19 (CUM 0408, PAYMENT 2508) AKRA RP 50 (CUM 0408, PAYMENT 1308)
050820	PGLI RP 1 (CUM 0508, PAYMENT 2608) ABDA RP 60 (CUM 0508, PAYMENT 2608)
060820	XCID RP 0.7984 (CUM 060820, PAYMENT 2408) SRSN RP 2 (CUM 0608, PAYMENT 2808) INTP RP 500 (CUM 0608, PAYMENT 2808)

RUPS

30820	TOTO INDX BLUE APII
040820	WTON KIOS IPCC
050820	TPIA SMBR PURA PGJO MTPS INDO FPRZ DFAM DEAL CLAY BCIP APEX ANDI ACES
060820	RUIS MTLA BRPT BAPA AMFG
070920	SINI RODA RMBA REAL PEGE PANI MLIA LPGI BSMR AMAN

IPO

RIGTH ISSUE

JAKARTA COMPOSITE INDEX



PREVIOUS 5 AGUSTUS 2020

CLOSING	5127.051	+1.026%
TRANSACTION	IDR 9.33TRILLION	
FOREIGN NETT	IDR 440 BIO (SELL)	

PREDICTION 6 AGUSTUS 2020

BULLISH
RANGE 5059-5157

TWO WHITE SOLDIERS
STOCHASTIC : UPTREND
MACD : HISTOGRAM NEGATIF MENGECEIL DAN BERSIAP
GOLDEN CROSS

TECHNICAL RECOMENDATION



JPFA – PT JAPFA COMFEED INDONESIA TBK

CLOSING 5/8/2020 RP 1045 (+2.5%)

BUY

TARGET PRICE 1200

STOPLOSS < 1010

TWO WHITE SOLDIERS

STOCHASTIC : GOLDEN CROSS

MACD : HISTOGRAM NEGATIF MENGECIL DAN BERSIAP GOLDEN CROSS

TECHNICAL RECOMENDATION



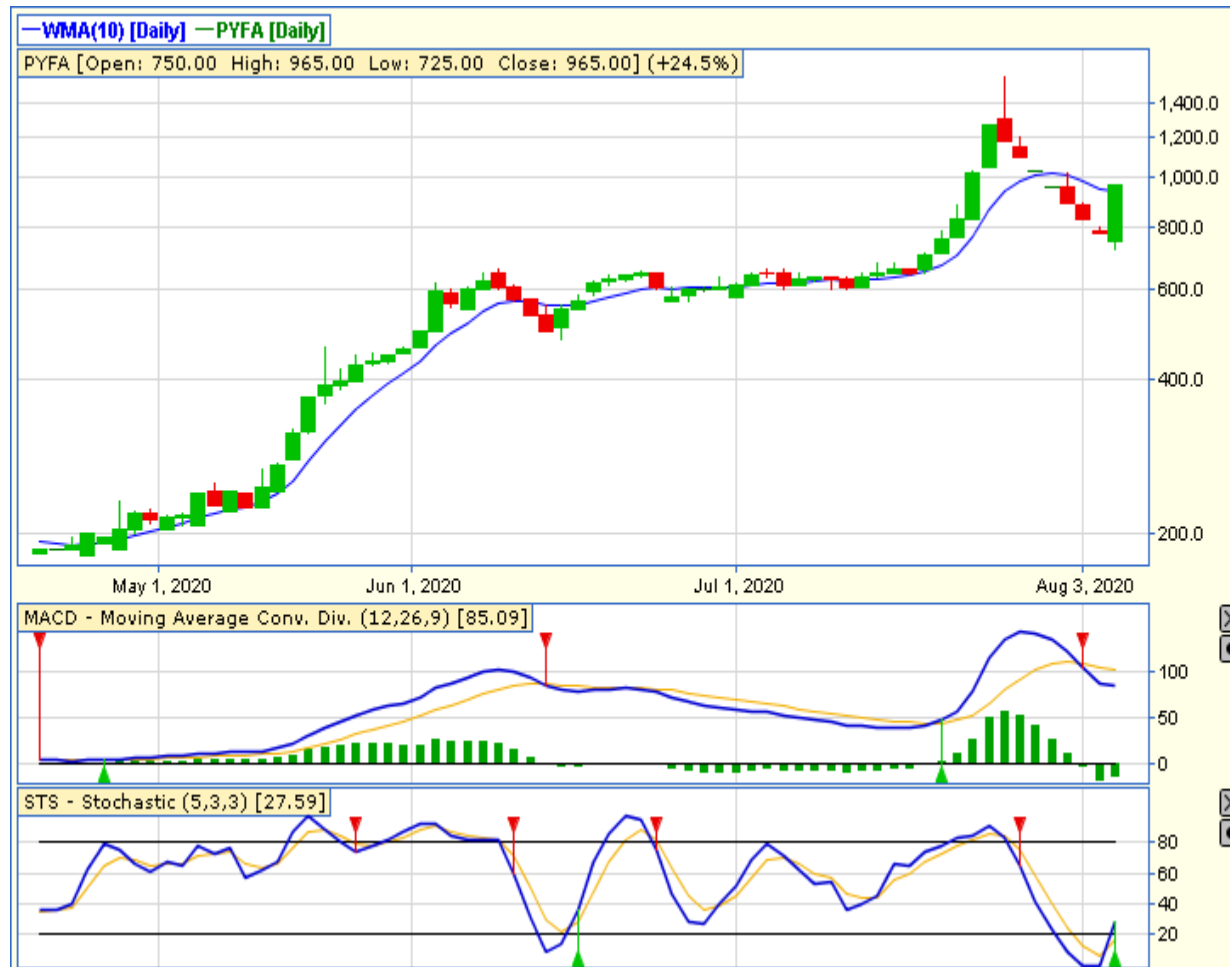
**IMAS – PT INDOMOBIL SUKSES INTERNASIONAL
TBK**

CLOSING 5/8/2020 RP 255 (+0.8%)

**BUY
TARGET PRICE 695
STOPLOSS < 615**

**TWO WHITE SOLDIERS
STOCHASTIC : GOLDEN CROSS
MACD : HISTOGRAM NEGATIF MENGECIL DAN
BERSIAP GOLDEN CROSS**

TECHNICAL RECOMENDATION



PYFA – PT PYRIDAM FARMA TBK

CLOSING 5/8/2020 RP 965 (+24.5%)

BUY

TARGET PRICE 1575

STOPLOSS < 885

MORNING STAR

STOCHASTIC : GOLDEN CROSS

MACD : HISTOGRAM NEGATIF MENGECIL DAN NETRAL

TECHNICAL RECOMENDATION



**TLKM – PT TELEKOMUNIKASI INDONESIA
(PERSERO) TBK**

CLOSING 5/8/2020 Rp 3020 (+2.4%)

**SELL ON STRENGTH
TAKE PROFIT 3130**

**MORNING STAR
STOCHASTIC : UPTREND
MACD : HISTOGRAM NEGATIF MENGECIL DAN
BERSIAP GOLDEN CROSS**

TECHNICAL RECOMENDATION



NIKL – PT PELAT TIMAH NUSANTARA TBK

CLOSING 5/8/2020 RP 910 (+12.3%)

**SELL ON STRENGTH
TAKE PROFIT 1130**

**BULL FLAG
STOCHASTIC : GOLDEN CROSS
MACD : HISTOGRAM POSITIF DAN UPTREND**

TECHNICAL RECOMENDATION



ADRO – PT ADARO ENERGY TBK

CLOSING 5/8/2020 RP 1050 (+1.4%)

BUY

TARGET PRICE 1135

STOPLOSS < 1030

TRIANGLE

STOCHASTIC : GOLDEN CROSS

MACD : HISTOGRAM NEGATIF MENGECIL DAN BERSIAP GOLDEN CROSS

RESEARCH TEAM



YULIANA

**RESEARCH ANALYST &
CORPORATE FINANCE**



DIMAS WP PRATAMA, CSA

TECHNICAL ANALYST

EQUITY CAPITAL MARKET TEAM



JESSIE JAMES

HEAD OF EQUITY SALES



PRASETYO NUGROHO

HEAD OF DEALING ROOM



GABRIELLA PRATIWY

HEAD OF ONLINE TRADING